



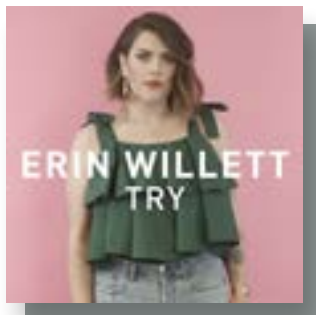
ERIN WILLETT

PERSONALITY + MUSICIAN + HUMAN

BIO

Erin was introduced to the world on Season 2 of NBC's hit reality show, *The Voice*. Working under Blake Shelton's guidance, Erin became a semi-finalist and final 2 standing from Team Blake. Erin went on to overcome personal struggles and inspired millions when she shared her weight loss journey as a contestant on NBC's *The Biggest Loser*. Through a partnership with Planet Fitness, Erin continued to inspire during speaking engagements and appearances at multiple locations of the

worldwide gym franchise. Erin now brings her unique life experience as well as her quirky curiosity to radio. She is a consistent character on *The Tommy Show* (WAID) 94.7 Fresh FM as well as a go-to fill-in at *Karen and Jeffrey* (WNEW) 102.7 Fresh FM. Erin performs frequently with her band, and recently released the Pancreatic Cancer Action Network anthem, "Hope's Alive" which she performs at PurpleStrides all over the country.



AVAILABLE ON

MUSIC

ASSN.

